



DSS1E-X FOR ET200S HIGH FEATURE DIRECT SOFT
STARTER SETTING RANGE 2.4...16A ELECTRONIC
SWITCHING ELECTRONIC PROTECTION AC-3/TO
7.5KW/400V EXPANDABLE FOR BRAKE CONTROL
MODULE 2DI MODULE MOTORSTARTER ES SIGNAL
FROM CIRCUIT-BREAKER PARAMETERIZABLE DPV 1
CAPABLE PROFIENERGY CAPABLE ON PN

General technical data:

product brand name		Sirius
product designation		motor starter ET 200S
Design of the product		direct starter
Product function		
• bus-communication		Yes
• direct start		Yes
• reverse starting		No
• on-site operation		Yes
• short circuit protection		Yes
Design of the switching contact		solid-state
Product component / outlet for enine brake		Yes
Trip class		CLASS 10 and 10A adjustable
Type of assignment		1
Product equipment		
• brake control with 230 V AC		No
• brake control with 24 V DC		No
• brake control with 180 V DC		No
• brake control with 500 V DC		No
Product extension / braking module for brake control		Yes

Impulse voltage resistance / rated value	kV	6
Insulation voltage / rated value	V	500
Active power loss / typical	W	16
Maximum permissible voltage for safe disconnection / between main circuit and auxiliary circuit	V	400
Item designation <ul style="list-style-type: none"> • according to DIN EN 61346-2 • according to DIN 40719 extendable after IEC 204-2 / according to IEC 750 		Q A
Type of mounting		Can be plugged into terminal module
Depth	mm	150
Height	mm	290
Width	mm	65

Main circuit:

Operating voltage <ul style="list-style-type: none"> • rated value 	V	400 ... 500
Adjustable response current <ul style="list-style-type: none"> • of the current-dependent overload release 	A	2.4 ... 16
Service power <ul style="list-style-type: none"> • at AC-3 / at 400 V / rated value • for three-phase servomotors / at 400 V / at 50 Hz • minimum 	kW kW	7.5 1.1 ... 7.5
Breaking capacity limit short-circuit current (I_{cu}) / at 400 V / rated value	kA	50
Design of the short-circuit protection		circuit-breakers
Number of poles / for main current circuit		3
Type of the motor protection		solid-state

Control circuit:

Type of voltage / of the controlled supply voltage		DC
Control supply voltage / 1 <ul style="list-style-type: none"> • for DC 	V	24 ... 24
Control supply voltage / 1 / for DC <ul style="list-style-type: none"> • rated value 	V	20.4 ... 28.8

Supply voltage:

Type of voltage / of supply voltage		DC
Supply voltage / 1 <ul style="list-style-type: none"> • for DC 	V	24 ... 24
Supply voltage / 1 / for DC <ul style="list-style-type: none"> • rated value 	V	20.4 ... 28.8

Ambient conditions:		
Protection class IP		IP20
Ambient temperature		
• during operating	°C	0 ... 60
• during storage	°C	-40 ... +70
• during transport	°C	-40 ... +70
Relative humidity		
• during operating phase	%	5 ... 95
Resistance against vibration		2g
Resistance against shock		5g / 11 ms
Degree of pollution		3 at 400 V, 2 at 500 V according to IEC60664 (IEC61131)
Installation altitude / at a height over sea level / maximum	m	2,000
mounting position		vertical, horizontal

Communication:		
Protocol / is supported		
• PROFIBUS DP protocol		Yes
• PROFINET protocol		Yes
• AS interface protocol		No
Design of the interface / PROFINET protocol		Yes
Design of the electrical connection		
• of the communication interface		via backplane bus
• for communication transmission		via backplane bus

Connections:		
Number of digital inputs		2
Number of sockets		
• for digital input signals		0
• for digital output signals		0
Product function		
• digital inputs parameterizable		Yes
• digital outputs parameterizable		No
Design of the electrical connection		
• 1 / for digital input signals		using control module
• 2 / for digital input signals		using control module
• at the manufacturer-specific device interface		plug
• for main energy infeed		screw-type terminals
• for motor outgoing line		screw-type terminals
• for main energy transmission		via energy bus

- for supply voltage infeed
- for supply voltage transmission
- for main current circuit

via backplane bus
via backplane bus
screw-type terminals

EMC:

Conductor-bound parasitic coupling BURST / according to IEC 61000-4-4

2 kV on voltage supply, inputs and outputs

Conductor-bound parasitic coupling conductor-earth SURGE / according to IEC 61000-4-5

2 kV (U > 24 V DC)

Conductor-bound parasitic coupling conductor-conductor SURGE / according to IEC 61000-4-5

1 kV (U > 24 V DC)

Field-bound parasitic coupling / according to IEC 61000-4-3

80 MHz ... 1 GHz 10 V/m, 1.4 GHz ... 2 Hz 3 V/m, 2 GHz ... 2.7 GHz 1 V/m

Verification of suitability

CE / UL / CSA / CCC

Protection against electrical shock

finger-safe

Certificates/approvals:

General Product Approval

**Declaration of
Conformity**



CCC



CSA



GOST



UL



EG-Konf.

Test Certificates

other

[Type Test
Certificates/Test
Report](#)



Profibus

[Environmental
Confirmations](#)

Further information:

Information- and Downloadcenter (Catalogs, Brochures,...)

<http://www.siemens.com/industrial-controls/catalogs>

Industry Mall (Online ordering system)

<http://www.siemens.com/industrial-controls/mall>

CAX-Online-Generator

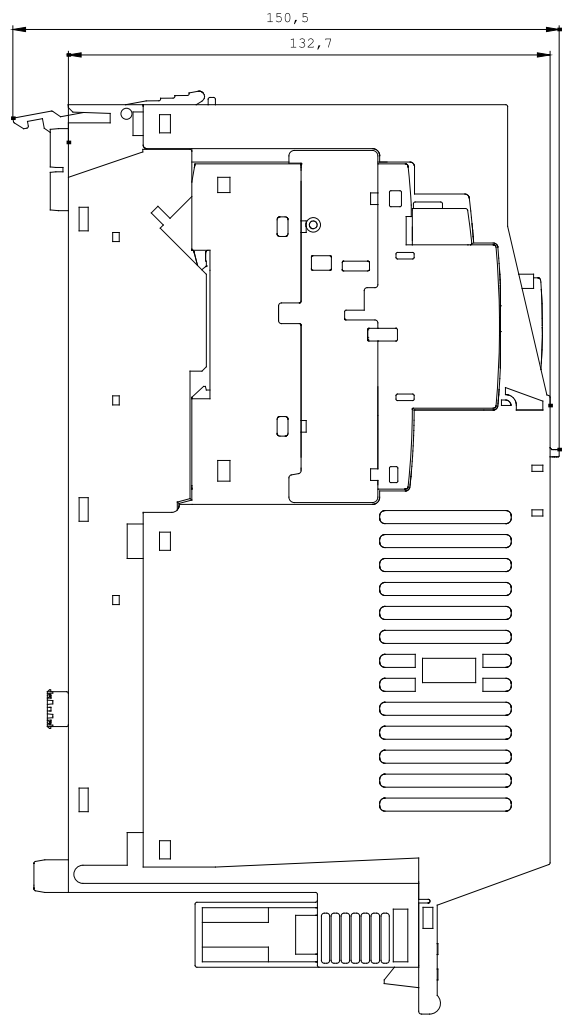
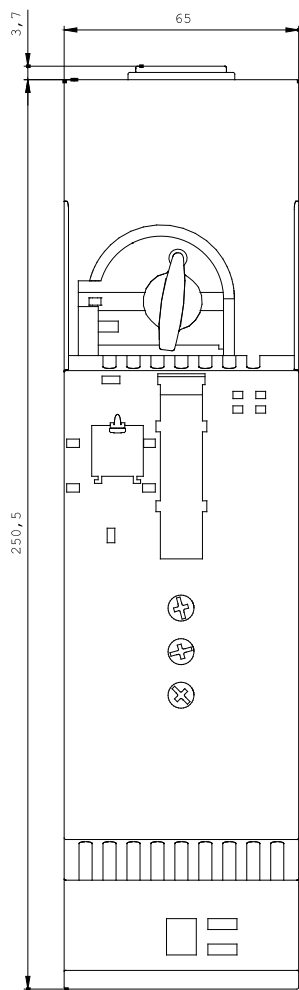
<http://www.siemens.com/cax>

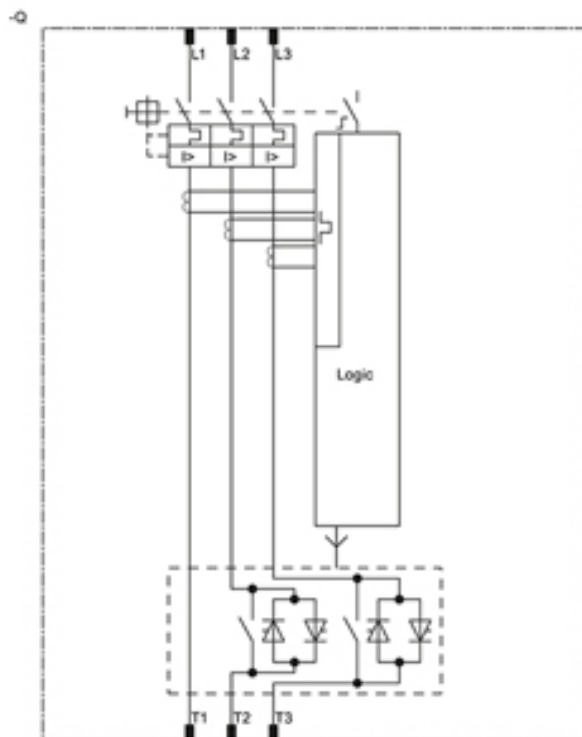
Service&Support (Manuals, Certificates, Characteristics, FAQs,...)

<http://support.automation.siemens.com/WW/view/en/3RK1301-0CB20-0AB4/all>

Image database (product images, 2D dimension drawings, 3D models, device circuit diagrams, ...)

http://www.automation.siemens.com/bilddb/cax_en.aspx?mlfb=3RK1301-0CB20-0AB4





last change:

Oct 28, 2013