

FS-10798E Series

Flow Rate Settings: 2.0 - 75 (l/m) variable adjustment of set points

These externally adjustable switches are ideal for protecting machine tools from coolant flow failure, for protecting bearings from loss of lubricant or to assure proper air flow. They offer an infinite number of flow settings at pressures up to 68 bar (1000 PSIG), with low pressure drop and precise repeatability.

The adjusting vane is easily field adjustable using an ordinary flat-bladed screwdriver. The adjustment is set-screw-locked for tamper-free operation after field calibration.

Specifications

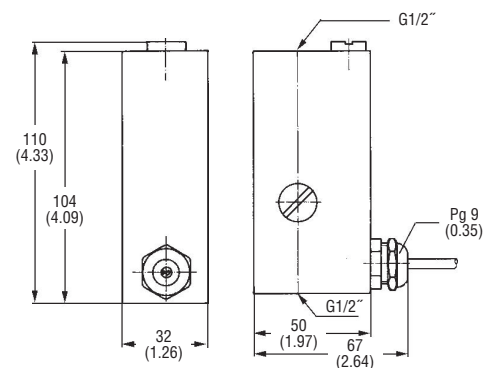
Wetted Materials	
Housing	Brass or Stainless Steel
Piston	Polysulfone (optional Brass) or Stainless Steel
Spring	Stainless Steel
O-Ring	Viton®
Max Flow	85 l/min
Max. Operating Pressure	68 bar (986 PSI)
Proof Pressure	100 bar (1450 PSI)
Temperature Range	
With Polysulfone piston (standard), cable and plug connector	-20°C to +80°C (-4°F to +176°F)
With metal piston and terminal box	-20°C to +150°C (-4°F to +302°F)
Adjustment Range	2 to 75 l/min
Switching Function (Related to Increasing Flow)	NC, NO, SPDT
Mounting Orientation	Any position
Factory Calibration Position	Horizontal, electrical connection up
Repeatability	±1%
Adjustment Accuracy	±10%
Hysteresis, Max.	15%
Mounting	G 1/2"
Electrical Connections	Cable: PVC, 2 or 3 x 0.34 mm ² (length: approx. 1 m) Plug connector per DIN 43650 Terminal box
Enclosure	IP65
Electrical Data Contact Rating	SPST (NO/NC): 100 VA, 3 A, 220 V~ SPDT: 20 VA, 0.5 A, 250 V~
Weight	1.2 kg

Note: All data related to water at 20°C (68°F).

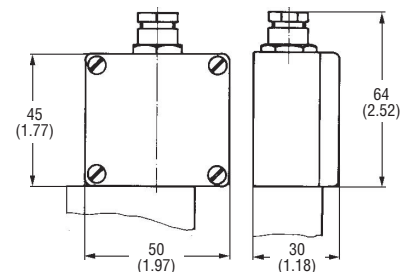


Dimensions – mm (in)

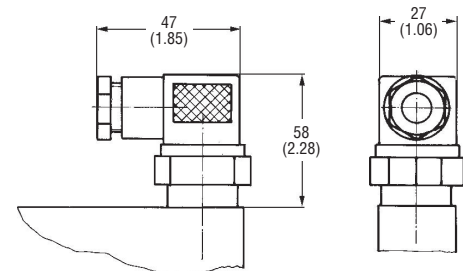
With Wire Leads and Strain Relief



With Terminal Box



With Plug Connector



How to Order

Use the **bold** characters from the chart below to construct a product code.

SELECT

1. **FS-10798E** Series:

2. Housing Material:

3. Electric Connection:

4. Type of Contact:

FS-10798E

M

P

W

M - Brass

C - Stainless Steel

P - Cable

K - Terminal Box

S - Plug Connector

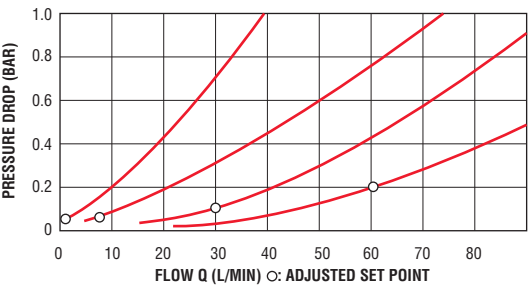
S - NO

O - NC

W - SPDT

Note:
1. For mineral oil applications please order brass piston instead of polysulfone piston, -GE169 to the number e.g. FS-925E-0.4-M-P-W-GE169.

Pressure Drop - Typical



Wiring Diagram

